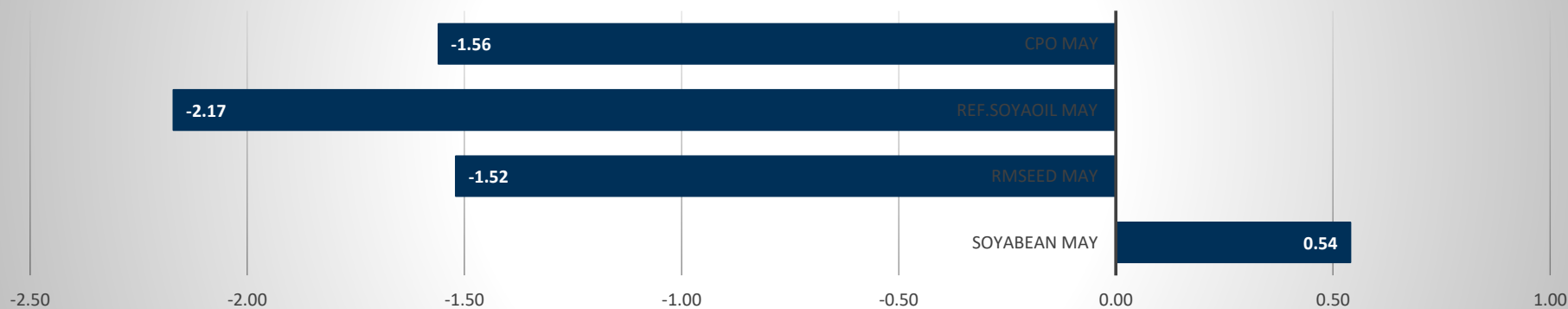


Commodity	Open	High	Low	Close	Rs.Chg	% Chg	Spot	Vol	OI	OI Chg	OI STATUS
Soyabean May	6975.00	7167.00	6950.00	7107.00	38.00	0.54	7235.00	24555	60635	-12.57	Short Covering
Rmseed May	6950.00	6950.00	6850.00	6871.00	-106.00	-1.52	7325.00	19760	60940	-4.17	Long Liquidation
Ref.Soyaoil May	1385.00	1385.00	1352.50	1360.70	-30.20	-2.17	1427.50	35950	32365	-7.71	Long Liquidation
Cpo May	1174.20	1177.30	1150.50	1155.70	-18.30	-1.56	1217.30	3254	5171	-8.61	Long Liquidation

Commodity	Daily Levels								Trend	Performance			
	Close	Res - 3	Res - 2	Res - 1	Pivot	Sup - 1	Sup - 2	Sup - 3		1 Week	1 Month	3 Month	1 Year
Soyabean May	7107.00	7417.0	7292.0	7200.0	7075.0	6983.0	6858.0	6766.0	Positive	-7.47	15.67	34.84	46.17
Rmseed May	6871.00	7030.0	6990.0	6930.0	6890.0	6830.0	6790.0	6730.0	Negative	-6.65	17.30	19.18	39.25
Ref.Soyaoil May	1360.70	1413.0	1399.0	1380.0	1366.0	1347.0	1333.0	1314.0	Negative	-5.41	6.70	19.04	41.46
Cpo May	1155.70	1198.7	1188.0	1171.9	1161.2	1145.1	1134.4	1118.3	Negative	-6.20	2.02	18.22	45.31

Price Movement



DAILY SOYABEAN SYPNOSIS

Expiry	Open	High	Low	Close	Rs.Chg	% Chg	Spot	Vol	OI	OI Chg	Fut-Spot	OI STATUS
20 MAY 2021	6975.00	7167.00	6950.00	7107.00	38.00	0.54	7235.00	24555	60635	-12.57	-128.00	Short Covering
18 JUN 2021	6669.00	6800.00	6669.00	6720.00	-47.00	-0.69	7235.00	11220	39015	0.09	-515.00	Fresh Selling
20 JUL 2021	6500.00	6550.00	6480.00	6498.00	-73.00	-1.11	7235.00	840	4585	-4.28	-737.00	Long Liquidation

- Soyabean trading range for the day is 6858-7292.
- Soyabean prices gained tracking rise in overseas prices as global supply tightens, and demand persists.
- USDA said soybean export sales totaled 731,500 tonnes, topping forecasts that ranged from 100,000 tonnes to 700,000 tonnes.
- Russia plans to reduce export tax on soybeans from July 1
- At the Indore spot market in top producer MP, soybean dropped -28 Rupees to 7235 Rupees per 100 kgs.

CHART



TECHNICALS

Simple Moving Average

5 Days	10 Days	20 Days	50 Days	100 Days	200 Days
7036	7215	6855	5893	5220	4626
BUY	SELL	BUY	BUY	BUY	BUY

Exponential Moving Average

5 Days	10 Days	20 Days	50 Days	100 Days	200 Days
7099	7062	6806	6116	5500	4928
BUY	BUY	BUY	BUY	BUY	BUY

Spread

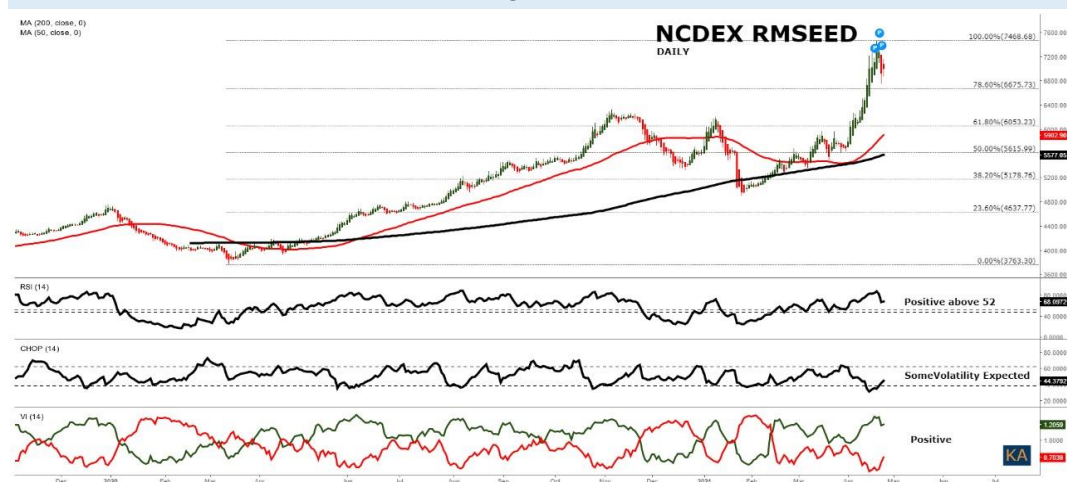
Month	Rate	MAY	JUN	JUL
MAY	7107		-387	-609
JUN	6720			-222
JUL	6498			

DAILY RMSEED SYNOPSIS

Expiry	Open	High	Low	Close	Rs.Chg	% Chg	Spot	Vol	OI	OI Chg	Fut-Spot	OI STATUS
14 MAY 2021	6950.00	6950.00	6850.00	6871.00	-106.00	-1.52	7325.00	19760	60940	-4.17	-454.00	Long Liquidation
18 JUN 2021	6945.00	6945.00	6842.00	6863.00	-117.00	-1.68	7325.00	8180	32880	2.59	-462.00	Fresh Selling
20 JUL 2021	6916.00	6930.00	6875.00	6889.00	-127.00	-1.81	7325.00	940	4210	7.95	-436.00	Fresh Selling

- Rmseed trading range for the day is 6790-6990.
- Mustard seed prices dropped after reports 100% Rapeseed Mustard has been harvested
- Pressure also seen after SOPA, MOPA and SEA have written a letter to SEBI to curb futures
- As per USDA, World Mustard seed production is estimated to remain steady at 689 lakh tonnes in 2020-21.
- In Alwar spot market in Rajasthan the prices gained 105 Rupees to end at 7325 Rupees per 100 kg.

CHART



TECHNICALS

Simple Moving Average

5 Days	10 Days	20 Days	50 Days	100 Days	200 Days
6942	7031	6606	5992	5852	5666
SELL	SELL	BUY	BUY	BUY	BUY

Exponential Moving Average

5 Days	10 Days	20 Days	50 Days	100 Days	200 Days
6954	6897	6659	6230	5966	5633
SELL	SELL	BUY	BUY	BUY	BUY

Spread

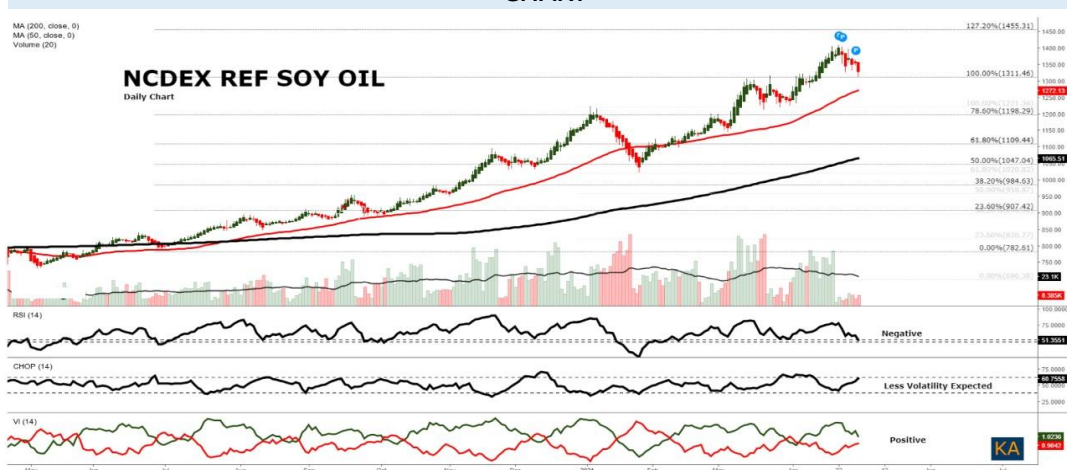
Month	Rate	MAY	JUN	JUL
MAY	6871		-8	18
JUN	6863			26
JUL	6889			

DAILY SOYOIL SYNOPSIS

Expiry	Open	High	Low	Close	Rs.Chg	% Chg	Spot	Vol	OI	OI Chg	Fut-Spot	OI STATUS
14 MAY 2021	1385.00	1385.00	1352.50	1360.70	-30.20	-2.17	1427.50	35950	32365	-7.71	-66.80	Long Liquidation
18 JUN 2021	1341.00	1342.00	1312.00	1320.10	-29.40	-2.18	1427.50	8385	10995	4.71	-107.40	Fresh Selling
20 JUL 2021	1315.00	1315.80	1281.00	1289.90	-38.30	-2.88	1427.50	365	800	16.79	-137.60	Fresh Selling

- Ref.Soya oil trading range for the day is 1333-1399.
- Ref soyoil settled down on profit booking after reports that summer oilseed crop sowing progress is very good as on date.
- There is no impact of COVID-19 pandemic situation on progress of area coverage under summer crops in the country.
- Oilseeds 10.45 lakh ha area against 9.03 lakh ha area of last year, thus increase in area coverage by 1.41 lakh ha.
- At the Indore spot market in Madhya Pradesh, soyoil was steady at 1427.5 Rupees per 10 kgs.

CHART



TECHNICALS

Simple Moving Average

5 Days	10 Days	20 Days	50 Days	100 Days	200 Days
1386.5	1396.2	1363.1	1286.0	1204.9	1070.3
SELL	SELL	SELL	BUY	BUY	BUY

Exponential Moving Average

5 Days	10 Days	20 Days	50 Days	100 Days	200 Days
1383.9	1382.6	1361.0	1295.6	1215.9	1109.0
SELL	SELL	SELL	BUY	BUY	BUY

Spread

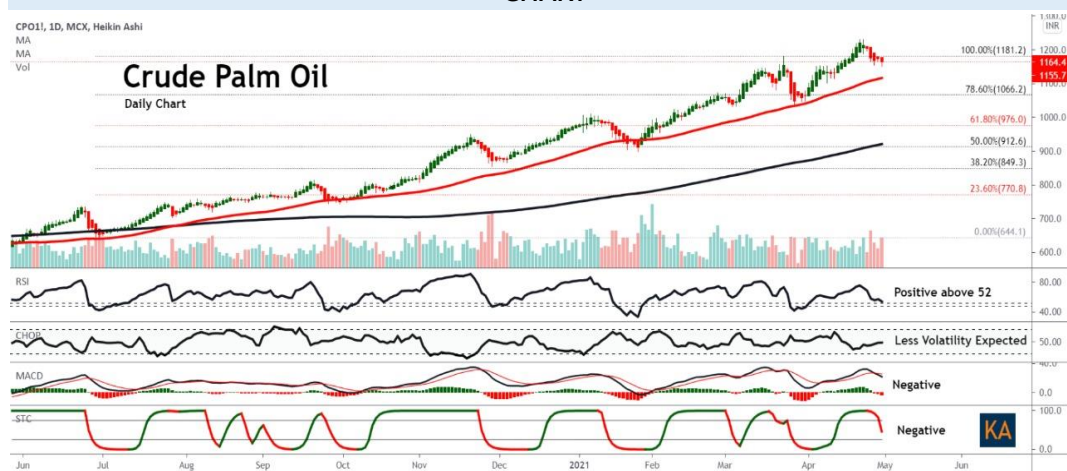
Month	Rate	MAY	JUN	JUL
MAY	1360.7		-40.6	-70.8
JUN	1320.1			-30.2
JUL	1289.9			

DAILY CRUDE PALM OIL SYPNOSIS

Expiry	Open	High	Low	Close	Rs.Chg	% Chg	Spot	Vol	OI	OI Chg	Fut-Spot	OI STATUS
14 MAY 2021	1174.20	1177.30	1150.50	1155.70	-18.30	-1.56	1217.30	3254	5171	-8.61	-61.60	Long Liquidation
30 JUN 2021	1132.60	1135.00	1105.00	1109.70	-23.80	-2.10	1217.30	511	691	-11.64	-107.60	Long Liquidation
30 JUL 2021	1090.00	1090.00	1077.00	1085.60	-29.40	-2.64	1217.30	3	3	0.00	-131.70	Long Liquidation

- CPO trading range for the day is 1134.4-1188.
- Crude palm oil dropped as Indonesia's March crude palm oil production was up 13.5% compared to the year ago
- Crude palm oil output in March stood at 3.71 million tonnes compared with the 3.27 million tonnes produced in the same month last year.
- Indonesia estimates that it will export 5.9% more crude and refined palm oil in 2022 than this year, official data showed.
- In spot market, Crude palm oil dropped by -3 Rupees to end at 1217.3 Rupees.

CHART



TECHNICALS

Simple Moving Average

5 Days	10 Days	20 Days	50 Days	100 Days	200 Days
1205.2	1205.4	1174.4	1129.4	1047.3	925.6
SELL	SELL	SELL	BUY	BUY	BUY

Exponential Moving Average

5 Days	10 Days	20 Days	50 Days	100 Days	200 Days
1195.9	1195.1	1178.6	1128.6	1058.5	958.0
SELL	SELL	SELL	BUY	BUY	BUY

Spread

Month	Rate	MAY	JUN	JUL
MAY	1155.7		-46.0	-70.1
JUN	1109.7			-24.1
JUL	1085.6			

SOYABEAN PRICE MOVEMENT SINCE 2011

Year						Sowing	Growth	Harvesting					Crop Calendar
	JAN	FEB	MAR	APR	MAY	JUN	JUL	AUG	SEP	OCT	NOV	DEC	
2011	2474.50	2408.00	2338.50	2415.50	2372.00	2294.00	2445.50	2410.50	2090.00	2178.50	2243.50	2514.00	140.00
	4.23	-2.69	-2.89	3.29	-1.80	-3.29	6.60	-1.43	-13.30	4.23	2.98	12.06	5.90
2012	2451.50	2668.50	3085.50	3625.00	3404.00	3968.50	4370.50	3947.50	3201.50	3298.00	3209.50	3203.00	689.00
	-2.49	8.85	15.63	17.49	-6.10	16.58	10.13	-9.68	-18.90	3.01	-2.68	-0.20	27.41
2013	3287.50	3324.50	3641.00	3932.00	3810.00	3670.50	2973.00	3470.00	3531.00	3925.00	3860.00	3819.00	616.00
	2.64	1.13	9.52	7.99	-3.10	-3.66	-19.00	16.72	1.76	11.16	-1.66	-1.06	19.23
2014	3926.50	4165.00	4311.50	4777.50	4592.00	4094.00	3639.00	3358.00	2963.00	3289.00	3300.00	3366.00	-453.00
	2.81	6.07	3.52	10.81	-3.88	-10.84	-11.11	-7.72	-11.76	11.00	0.33	2.00	-11.86
2015	3434.00	3406.00	3458.00	4025.00	3890.00	3329.00	3160.00	3218.00	3429.00	3909.00	3907.00	3880.00	514.00
	2.02	-0.82	1.53	16.40	-3.35	-14.42	-5.08	1.84	6.56	14.00	-0.05	-0.69	15.27
2016	3726.00	3664.00	4010.00	3927.00	3835.00	3740.00	3557.00	3257.00	3235.00	3114.00	3116.00	3029.00	-851.00
	-3.97	-1.66	9.44	-2.07	-2.34	-2.48	-4.89	-8.43	-0.68	-3.74	0.06	-2.79	-21.93
2017	3092.00	3007.00	2941.00	3002.00	2762.00	2925.00	3154.00	3097.00	3033.00	2823.00	3098.00	3118.00	89.00
	2.08	-2.75	-2.19	2.07	-7.99	5.90	7.83	-1.81	-2.07	-6.92	9.74	0.65	2.94
2018	3685.00	3802.00	3756.00	3669.00	3549.00	3566.00	3392.00	3222.00	3233.00	3269.00	3354.00	3399.00	281.00
	18.18	3.18	-1.21	-2.32	-3.27	0.48	-4.88	-5.01	0.34	1.11	2.60	1.34	9.01
2019	3826.00	3637.00	3681.00	3676.00	3718.00	3671.00	3582.00	3825.00	3939.00	3863.00	4072.00	4436.00	1037.00
	12.56	-4.94	1.21	-0.14	1.14	-1.26	-2.42	6.78	2.98	-1.93	5.41	8.94	30.51
2020	4084.00	3708.00	3796.00	3810.00	3830.00	3714.00	3780.00	4116.00	3866.00	4263.00	4415.00	4606.00	170.00
	-7.94	-9.21	2.37	0.37	0.52	-3.03	1.78	8.89	-6.07	10.27	3.57	4.33	3.83
2021	4644.00	5078.00	5993.00	7107.00									2501.00
	0.83	9.35	18.02	18.59									54.30
Average	1.48	0.61	4.39	6.05	-2.89	-1.85	-1.23	-0.14	-3.80	4.69	1.94	2.82	Average

RMSEED PRICE MOVEMENT SINCE 2011

Year	Growth		Harvesting			Sowing							Crop Calendar
	JAN	FEB	MAR	APR	MAY	JUN	JUL	AUG	SEP	OCT	NOV	DEC	
2011	2993.00	2924.00	2739.00	2806.00	2944.00	2901.00	3017.00	2997.00	2858.00	3104.00	3194.00	3311.00	318.00
	0.70	-2.31	-6.33	2.45	4.92	-1.46	4.00	-0.66	-4.64	8.61	2.90	3.66	10.62
2012	3346.00	3632.00	3925.00	4130.00	3901.00	3990.00	4397.00	4452.00	3927.00	4269.00	4214.00	3544.00	233.00
	1.06	8.55	8.07	5.22	-5.54	2.28	10.20	1.25	-11.79	8.71	-1.29	-15.90	7.04
2013	3492.00	3428.00	3479.00	3505.00	3514.00	3451.00	3182.00	3571.00	3641.00	3878.00	3811.00	3469.00	-75.00
	-1.47	-1.83	1.49	0.75	0.26	-1.79	-7.79	12.23	1.96	6.51	-1.73	-8.97	-2.12
2014	3353.00	3537.00	3504.00	3594.00	3456.00	3595.00	3641.00	3592.00	3693.00	3763.00	3885.00	3524.00	55.00
	-3.34	5.49	-0.93	2.57	-3.84	4.02	1.28	-1.35	2.81	1.90	3.24	-9.29	1.59
2015	3378.00	3406.00	3411.00	3869.00	4306.00	4255.00	4232.00	4317.00	4514.00	4923.00	4897.00	4244.00	720.00
	-4.14	0.83	0.15	13.43	11.29	-1.18	-0.54	2.01	4.56	9.06	-0.53	-13.33	20.43
2016	3877.00	3929.00	4202.00	4472.00	4503.00	4848.00	4875.00	4681.00	4642.00	4498.00	4876.00	3974.00	604.00
	-8.65	1.34	6.95	6.43	0.69	7.66	0.56	-3.98	-0.83	-3.10	8.40	-18.50	14.23
2017	3834.00	3848.00	3908.00	3759.00	3483.00	3609.00	3699.00	3771.00	3739.00	3897.00	4104.00	3939.00	-35.00
	-3.52	0.37	1.56	-3.81	-7.34	3.62	2.49	1.95	-0.85	4.23	5.31	-4.02	-0.88
2018	4187.00	4125.00	4054.00	3795.00	3958.00	4027.00	4214.00	4070.00	4241.00	4170.00	3977.00	3929.00	-10.00
	6.30	-1.48	-1.72	-6.39	4.30	1.74	4.64	-3.42	4.20	-1.67	-4.63	-1.21	-0.25
2019	3983.00	3840.00	3750.00	3744.00	3718.00	3939.00	3950.00	3922.00	3954.00	4306.00	4321.00	4658.00	729.00
	1.37	-3.59	-2.34	-0.16	-0.69	5.94	0.28	-0.71	0.82	8.90	0.35	7.80	18.55
2020	4109.00	4000.00	4118.00	4141.00	4490.00	4650.00	5014.00	5410.00	5468.00	6067.00	5871.00	5817.00	1159.00
	-11.79	-2.65	2.95	0.56	8.43	3.56	7.83	7.90	1.07	10.95	-3.23	-0.92	24.88
2021	5604.00	5536.00	5682.00	6871.00									1054.00
	-3.66	-1.21	2.64	20.93									18.12
Average	-2.47	0.32	1.13	3.81	1.25	2.44	2.29	1.52	-0.27	5.41	0.88	-6.07	Average

SOYOIL PRICE MOVEMENT SINCE 2011

	JAN	FEB	MAR	APR	MAY	JUN	JUL	AUG	SEP	OCT	NOV	DEC	Growth
2011	658.60	628.40	599.65	626.50	660.95	634.50	661.85	660.75	614.10	618.20	634.65	733.50	100.95
	4.12	-4.59	-4.58	4.48	5.50	-4.00	4.31	-0.17	-7.06	0.67	2.66	15.58	15.33
2012	683.15	712.75	751.40	775.70	735.65	761.50	784.85	792.20	663.20	686.70	720.25	695.80	-37.70
	-6.86	4.33	5.42	3.23	-5.16	3.51	3.07	0.94	-16.28	3.54	4.89	-3.39	-5.52
2013	737.35	680.85	688.10	719.30	715.05	673.00	651.95	703.20	686.20	748.85	713.80	698.10	2.30
	5.97	-7.66	1.06	4.53	-0.59	-5.88	-3.13	7.86	-2.42	9.13	-4.68	-2.20	0.31
2014	683.55	716.65	705.45	718.50	676.60	693.45	676.60	610.65	614.00	599.85	576.80	638.05	-60.05
	-2.08	4.84	-1.56	1.85	-5.83	2.49	-2.43	-9.75	0.55	-2.30	-3.84	10.62	-8.79
2015	620.10	595.40	583.60	582.50	613.00	588.15	574.70	574.15	598.05	611.30	619.65	614.50	-23.55
	-2.81	-3.98	-1.98	-0.19	5.24	-4.05	-2.29	-0.10	4.16	2.22	1.37	-0.83	-3.80
2016	610.10	617.40	642.50	657.60	656.95	644.10	631.30	645.95	661.45	674.30	727.65	706.95	92.45
	-0.72	1.20	4.07	2.35	-0.10	-1.96	-1.99	2.32	2.40	1.94	7.91	-2.84	15.15
2017	686.10	664.35	623.10	610.85	622.80	641.90	657.35	664.05	664.70	686.10	746.45	727.50	20.55
	-2.95	-3.17	-6.21	-1.97	1.96	3.07	2.41	1.02	0.10	3.22	8.80	-2.54	3.00
2018	743.85	760.85	786.85	764.75	776.40	756.20	742.30	739.75	748.30	754.85	719.95	730.10	2.60
	2.25	2.29	3.42	-2.81	1.52	-2.60	-1.84	-0.34	1.16	0.88	-4.62	1.41	0.35
2019	775.80	756.85	728.75	740.05	755.30	745.10	733.90	755.05	764.50	773.65	814.40	933.20	203.10
	6.26	-2.44	-3.71	1.55	2.06	-1.35	-1.50	2.88	1.25	1.20	5.27	14.59	26.18
2020	851.20	767.60	828.00	787.20	785.20	799.10	864.70	892.90	904.10	963.40	1072.30	1190.10	256.90
	-8.79	-9.82	7.87	-4.93	-0.25	1.77	8.21	3.26	1.25	6.56	11.30	10.99	30.18
2021	1105.50	1192.40	1269.50	1360.70									170.60
	-7.11	7.86	6.47	7.18									15.43
Average	-1.16	-1.01	0.93	1.39	0.43	-0.90	0.48	0.79	-1.49	2.70	2.90	4.14	Average

CPO PRICE MOVEMENT SINCE 2011

	JAN	FEB	MAR	APR	MAY	JUN	JUL	AUG	SEP	OCT	NOV	DEC	Growth
2011	559.50	539.80	510.70	521.20	535.80	478.40	487.40	490.20	480.80	475.70	508.90	545.40	0.60
	2.70	-3.52	-5.39	2.06	2.80	-10.71	1.88	0.57	-1.92	-1.06	6.98	7.17	0.11
2012	514.20	536.20	592.30	621.50	585.90	566.40	564.40	551.60	446.20	425.20	423.20	417.90	-127.50
	-5.72	4.28	10.46	4.93	-5.73	-3.33	-0.35	-2.27	-19.11	-4.71	-0.47	-1.25	-23.38
2013	438.20	450.80	454.90	464.90	480.50	502.20	496.60	568.70	532.40	557.20	558.30	540.20	122.30
	4.86	2.88	0.91	2.20	3.36	4.52	-1.12	14.52	-6.38	4.66	0.20	-3.24	29.27
2014	524.00	590.00	569.70	567.70	524.90	535.00	539.10	439.60	474.50	457.20	439.50	460.60	-79.60
	-3.00	12.60	-3.44	-0.35	-7.54	1.92	0.77	-18.46	7.94	-3.65	-3.87	4.80	-14.74
2015	425.00	466.10	434.40	435.40	456.80	451.40	417.60	360.50	425.70	400.80	382.40	411.00	-49.60
	-7.73	9.67	-6.80	0.23	4.92	-1.18	-7.49	-13.67	18.09	-5.85	-4.59	7.48	-10.77
2016	432.50	481.90	532.20	564.00	537.00	506.80	524.70	559.10	581.60	514.90	554.70	582.70	171.70
	5.23	11.42	10.44	5.98	-4.79	-5.62	3.53	6.56	4.02	-11.47	7.73	5.05	41.78
2017	587.50	544.90	538.80	516.80	512.70	490.80	488.70	518.20	547.80	545.30	589.60	554.60	-28.10
	0.82	-7.25	-1.12	-4.08	-0.79	-4.27	-0.43	6.04	5.71	-0.46	8.12	-5.94	-4.82
2018	560.60	587.50	651.80	642.60	653.10	643.40	616.80	599.50	594.00	593.50	500.70	511.60	-43.00
	1.08	4.80	10.94	-1.41	1.63	-1.49	-4.13	-2.80	-0.92	-0.08	-15.64	2.18	-7.75
2019	569.40	550.10	525.90	529.70	519.30	515.80	513.60	522.20	546.60	587.90	680.00	795.20	283.60
	11.30	-3.39	-4.40	0.72	-1.96	-0.67	-0.43	1.67	4.67	7.56	15.67	16.94	55.43
2020	771.80	648.60	663.50	609.00	658.20	646.20	731.80	764.90	754.90	817.50	883.70	977.80	182.60
	-2.94	-15.96	2.30	-8.21	8.08	-1.82	13.25	4.52	-1.31	8.29	8.10	10.65	22.96
2021	969.30	1059.10	1076.30	1155.70									177.90
	-0.87	9.26	1.62	7.38									18.19
Average	0.52	2.25	1.41	0.86	0.00	-2.27	0.55	-0.33	1.08	-0.68	2.22	4.38	Average

The logo for Kedia Advisory, featuring the word "KEDIA" in yellow and "ADVISORY" in white, both in a sans-serif font, set against a dark blue rectangular background.

KEDIA STOCKS & COMMODITIES RESEARCH PVT LTD.
Mumbai. INDIA.

For more details, please contact:
Mobile: +91 9323406035 / 9320096333 / 9619551022
Email: info@kediaadvisory.com
URL: www.kediaadvisory.com
SEBI REGISTRATION NUMBER - INH000006156

General Disclaimers: This Report is prepared and distributed by Kedia Stocks & Commodities Research Pvt Ltd. for information purposes only. The recommendations, if any, made herein are expression of views and/or opinions and should not be deemed or construed to be neither advice for the purpose of purchase or sale through KSCRPL nor any solicitation or offering of any investment /trading opportunity. These information / opinions / views are not meant to serve as a professional investment guide for the readers. No action is solicited based upon the information provided herein. Recipients of this Report should rely on information/data arising out of their own investigations. Readers are advised to seek independent professional advice and arrive at an informed trading/investment decision before executing any trades or making any investments. This Report has been prepared on the basis of publicly available information, internally developed data and other sources believed by KSCRPL to be reliable. KSCRPL or its directors, employees, affiliates or representatives do not assume any responsibility for, or warrant the accuracy, completeness, adequacy and reliability of such information / opinions / views. While due care has been taken to ensure that the disclosures and opinions given are fair and reasonable, none of the directors, employees, affiliates or representatives of KSCRPL shall be liable for any direct, indirect, special, incidental, consequential, punitive or exemplary damages, including lost profits arising in any way whatsoever from the information / opinions / views contained in this Report. The possession, circulation and/or distribution of this Report may be restricted or regulated in certain jurisdictions by appropriate laws. No action has been or will be taken by KSCRPL in any jurisdiction (other than India), where any action for such purpose(s) is required. Accordingly, this Report shall not be possessed, circulated and/ or distributed in any such country or jurisdiction unless such action is in compliance with all applicable laws and regulations of such country or jurisdiction. KSCRPL requires such recipient to inform himself about and to observe any restrictions at his own expense, without any liability to KSCRPL. Any dispute arising out of this Report shall be subject to the exclusive jurisdiction of the Courts in India.